

Leadership Learning Zone (LLZ)



What is it?

The Leadership Learning Zone is a flexible e-learning resource that takes a learner on an interactive exploration of key areas of leadership development. This resource is equally relevant to learners who are just starting in their careers as well as experienced managers who want to consolidate their leadership capabilities.

LLZ was developed by Leadership subject matter experts who develop and deliver a range of quality learning interventions for health and social care and public sector organisations.

LLZ resources are based on years of leadership experience from citizens, clinicians, managers and other staff who are delivering vital services. All resources are peer-reviewed ensuring a quality product.

LLZ has 22 Modules (with plans for more to be added) with interactive activities to support the leadership journey of learners with relevant, bite-sized modules. The way

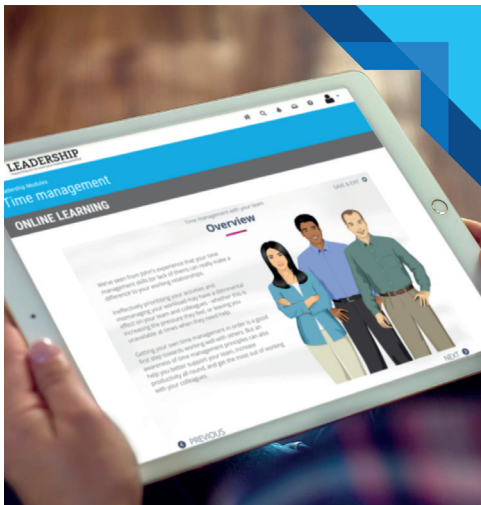
The way **LLZ** was developed ensures that learners who may only have limited time available can repeatedly return to the site and complete their learning in a truly flexible way.

Available modules

- Coaching skills
- Influencing stakeholders
- Talent management
- Time management
- Stress management
- Introduction to leadership
- Understanding yourself
- Managing people
- Managing through change
- Generations
- Unconscious bias
- Equality and diversity
- Interview skills
- Resilience
- Imposter syndrome
- Systems leadership
- Effective communication
- Talent management/succession planning
- Appreciative enquiry
- How to give feedback
- Kindness
- How to run action learning sets

Systems and Relational Leadership modules

The South West Leadership Learning Academy has developed ten Systems and Relational leadership modules in partnership with Tricordant. The resources are for leaders in health and care looking to learn more about leading and working collaboratively across organisational, professional and sector boundaries to improve healthcare and wellbeing for their population.



Why is this beneficial?

LLZ was developed to build leadership capability of staff across a range of sectors with the intention of contributing to the continuing delivery of excellent health, care and citizen services.

LLZ was also developed as a response to a range of organisations who found it difficult to release staff to attend vital traditional leadership training because of variety of reasons including service needs and the distances they were required to travel to get to venues. These barriers meant that many staff may have been unable to access quality leadership development opportunities at a time when they were most relevant.

To access the **London Leadership Academy LLZ** please visit and register for free here:

lon.leadershipnhs.uk